



**REGIONAL SPECIALISED METEOROLOGICAL CENTRE-TROPICAL CYCLONES, NEW DELHI  
TROPICAL WEATHER OUTLOOK**

---

**DEMS-RSMC TROPICAL CYCLONES NEW DELHI DATED 14.07.2021**

**TROPICAL WEATHER OUTLOOK FOR NORTH INDIAN OCEAN (THE BAY OF BENGAL AND ARABIAN SEA) VALID FOR NEXT 120 HOURS ISSUED AT 0600 UTC OF 14.07.2021 BASED ON 0300 UTC OF 14.07.2021.**

**BAY OF BENGAL:**

YESTERDAY'S LOW PRESSURE AREA OVER WESTCENTRAL & ADJOINING NORTHWEST BAY OF BENGAL OFF NORTH ANDHRA PRADESH SOUTH ODISHA COASTS BECAME LESS MARKED IN SAME EVENING (0900 UTC OF 13 TH JULY ) .

SCATTERED LOW AND MEDIUM CLOUDS WITH EMBEDDED INTENSE TO VERY INTENSE CONVECTION LAY OVER WESTCENTRAL AND SOUTH BAY OF BENGAL AND MODERATE TO INTENSE CONVECTION LAY OVER NORTH BAY OF BENGAL AND ANDAMAN SEA.

**PROBABILITY OF CYCLOGENESIS (FORMATION OF DEPRESSION) DURING NEXT 120 HRS):**

24 HOURS	24-48 HOURS	48-72 HOURS	72-96 HOURS	96-120 HOURS
NIL	NIL	NIL	NIL	NIL

**ARABIAN SEA:**

YESTERDAY'S LOW PRESSURE AREA OVER SOUTH GUJARAT & ADJOINING NORTHEAST ARABIAN SEA LAYS OVER COASTAL AREAS OF KUTCH AND NEIGHBOURHOOD AT 0300 UTC OF TODAY, THE 14<sup>th</sup> JULY 2021. THERE IS NO LIKELIHOOD OF IT'S INTENSIFICATION INTO A DEPRESSION. HENCE PROBABILITY OF CYCLOGENESIS IS NIL DURING NEXT 5 DAYS.

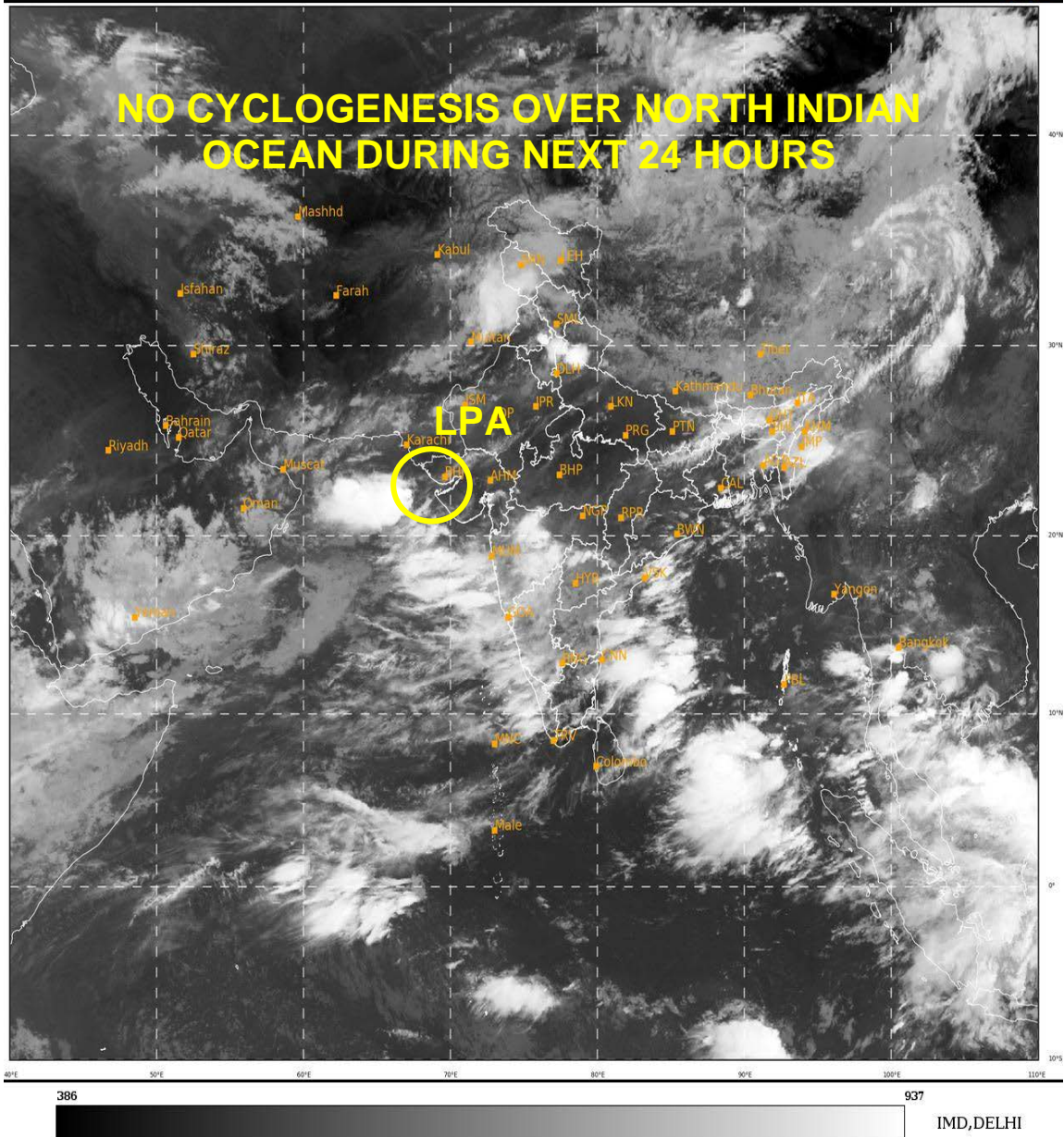
SCATTERED LOW AND MEDIUM CLOUDS WITH EMBEDDED INTENSE TO VERY INTENSE CONVECTION LAY OVER SAURASHTRA COAST ADJOINING ARABIAN SEA & NEIGHBOURHOOD IN ASSOCIATION WITH LOW LEVEL CIRCULATION OVER THE AREA.

SCATTERED LOW AND MEDIUM CLOUDS WITH EMBEDDED INTENSE TO VERY INTENSE CONVECTION LAY OVER NORTHEAST ADJOINING EASTCENTRAL ARABIAN SEA AND MODERATE TO INTENSE CONVECTION LAY OVER SOUTHEAST ARABIAN SEA & COMORIN REGION. SCATTERED LOW AND MEDIUM CLOUDS WITH EMBEDDED WEAK TO MODERATE CONVECTION LAY OVER WESTCENTRAL ARABIAN SEA.

**PROBABILITY OF CYCLOGENESIS (FORMATION OF DEPRESSION) DURING NEXT 120 HRS):**

24 HOURS	24-48 HOURS	48-72 HOURS	72-96 HOURS	96-120 HOURS
NIL	NIL	NIL	NIL	NIL

**REMARKS:** NIL



- LPA STANDS FOR LOW PRESSURE AREA